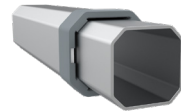


# 10x10ft Awning Tents



## Frame Specifications

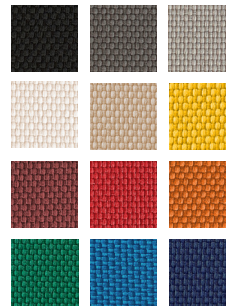
**S1**

### Frame Construction

<b>Frame Material</b>	3x Strong, All-Aluminum (T606)
<b>Leg Shape &amp; Profile</b>	Octagonal Leg, 43mm (2.5mm)
<b>Truss Profile</b>	30x15mm (2.8mm)
<b>Connecting Elements</b>	✓ Aluminum with Rubber Caps
<b>Push-Button Locks</b>	✓ Comfort Press
<b>Corner Brackets</b>	✓ Spring Tension & Corner Clips

<b>Transport Bag</b>	Heavy-Duty PVC with Window
----------------------	----------------------------

Awning Model	Weight	Entrance Height	Peak Height	Awning Depth	Pack Size (L x W x H)
1-Awning	82.7lbs (37.6kg)	6' 8" (202cm)	11' 7" (353cm)	31.4" (80cm)	17.3 x 16.5 x 62"
2-Awning	86.5lbs (39.3kg)	6' 8" (202cm)	11' 7" (353cm)	31.4" (80cm)	20.8 x 20.2 x 66"
3-Awning	95.3lbs (43.3kg)	6' 8" (202cm)	11' 7" (353cm)	31.4" (80cm)	20.8 x 20.2 x 66"
4-Awning	87.3lbs (39.7kg)	6' 8" (202cm)	13' 6" (412.5cm)	31.4" (80cm)	20.8 x 20.2 x 66"



**Custom Printing**  
Individual Logo or Full Surface

**Roof Fabric Options**  
Pirontex®, Oxford Weave 500D  
Polyester, Heavy-Duty PVC, Fiberglass, Loden

## Customization Options

### Frame Colors



### Frame Height Extensions

✓ Up to 36"

### Peak Flag Capable

✓ Frame & Roof Integrated

## Textile Properties

### Waterproof Rating (DIN EN 20811)

### Pirontex®

✓ 5x Industry Avg  
5,000mm Water Column

### Oxford 500D

✓ 2x Industry Avg  
1,600mm Water Column

### Fire Rating Class

B - s2, d0 (difficult to ignite)

NFPA 701, CPAI-84 Sec.6, EN 13501-1:2019,  
CAN/ULC-S109, CA Title 19 Sec. 1237

### Color Fade Resistance (DIN EN ISO 105-B02)

Extreme  
(blue scale 7.0-8.0 of 8.0)

Durable  
(blue scale 4.5-6.5 of 8.0)