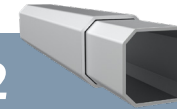


10x6.5ft



Frame Specifications

S2



Frame Construction

Frame Material	2x Strong, All-Aluminum (T606)
Leg Shape & Profile	Octagonal Leg, 37mm (2.1mm)
Truss Profile	28.5x15mm (2mm)
Connecting Elements	✓ Aluminum with Rubber Caps
Push-Button Locks	✓ Comfort Press
Corner Brackets	✓ Fixed Position & Corner Clips

Weight

61.8lbs. (28.1kg)

Transport Bag

Heavy-Duty PVC with Window

Customization Options

Roof Styles



Frame Colors



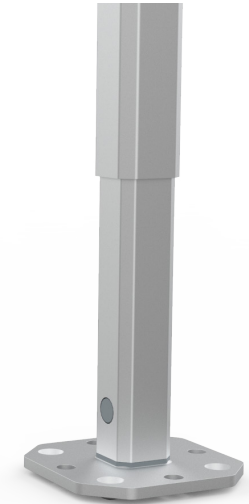
Anodized Aluminum

Frame Height Extensions

✓ Up to 12"

Peak Flag Capable

✓ Frame & Roof Integrated



Our professional-grade tents can mix and match frame and fabric quality, roof styles, colors, customizations, and more.

Rely on your Product Expert or visit our quick links:

[Mastertent Website](#)

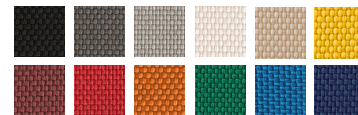
[3D Tent Configurator](#)

[Tent Sizes](#)

[Photo Gallery](#)

[Construction Details](#)

[Warranties & Certificates](#)



Custom Printing

Individual Logo or Full Surface



Roof Fabric Options

Pirontex®, Oxford Weave 500D Polyester, Heavy-Duty PVC, Fiberglass, Loden

Textile Properties

Pirontex®

Oxford 500D

Waterproof Rating

(DIN EN 20811)

✓ 5x Industry Avg

5,000mm Water Column

✓ 2x Industry Avg

1,600mm Water Column

Fire Rating Class

B - s2, d0 (difficult to ignite)

NFPA 701, CPAI-84 Sec.6, EN 13501-1:2019,

CAN/ULC-S109, CA Title 19 Sec. 1237

Color Fade Resistance

(DIN EN ISO 105-B02)

Extreme

(blue scale 7.0-8.0 of 8.0)

Durable

(blue scale 4.5-6.5 of 8.0)