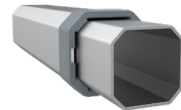


20x13ft Awning Tent Models



Frame Specifications

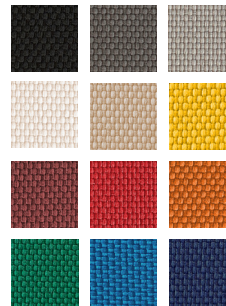
S1

Frame Construction

Frame Material	3x Strong, All-Aluminum (T606)
Leg Shape & Profile	Octagonal Leg, 43mm (2.5mm)
Truss Profile	30x15mm (2.8mm)
Connecting Elements	✓ Aluminum with Rubber Caps
Push-Button Locks	✓ Comfort Press
Corner Brackets	✓ Spring Tension & Corner Clips

Transport Bag	Heavy-Duty PVC with Window
----------------------	----------------------------

Awning Model	Weight	Entrance Height	Peak Height	Awning Depth	Pack Size (L x W x H)
1-Awning	82.7lbs (37.6kg)	6' 8" (202cm)	11' 7" (353cm)	31.4" (80cm)	17.3 x 16.5 x 62"
2-Awning	86.5lbs (39.3kg)	6' 8" (202cm)	11' 7" (353cm)	31.4" (80cm)	20.8 x 20.2 x 66"
3-Awning	95.3lbs (43.3kg)	6' 8" (202cm)	11' 7" (353cm)	31.4" (80cm)	20.8 x 20.2 x 66"
4-Awning	87.3lbs (39.7kg)	6' 8" (202cm)	13' 6" (412.5cm)	31.4" (80cm)	20.8 x 20.2 x 66"



Custom Printing

Individual Logo or Full Surface

Roof Fabric Options

Pirontex®, Oxford Weave 500D Polyester, Heavy-Duty PVC, Fiberglass, Loden

Customization Options

Frame Colors



200+ Custom RAL Colors

Frame Height Extensions

✓ Up to 36"

Peak Flag Capable

✓ Frame & Roof Integrated

Textile Properties

Waterproof Rating (DIN EN 20811)

Pirontex®

✓ 5x Industry Avg
5,000mm Water Column

Oxford 500D

✓ 2x Industry Avg
1,600mm Water Column

Fire Rating Class

B - s2, d0 (difficult to ignite)

NFPA 701, CPAI-84 Sec.6, EN 13501-1:2019, CAN/ULC-S109, CA Title 19 Sec. 1237

Color Fade Resistance (DIN EN ISO 105-B02)

Extreme
(blue scale 7.0-8.0 of 8.0)

Durable
(blue scale 4.5-6.5 of 8.0)