

# 20x13ft



Our professional-grade tents can mix and match frame and fabric quality, roof styles, colors, customizations, and more.

**Rely on your Product Expert or visit our quick links:**

[Mastertent Website](#)

[3D Tent Configurator](#)

[Tent Sizes](#)

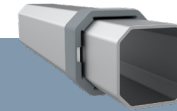
[Photo Gallery](#)

[Construction Details](#)

[Warranties & Certificates](#)

## Frame Specifications

### S1



### Frame Construction

<b>Frame Material</b>	3x Strong, All-Aluminum (T606)
<b>Leg Shape &amp; Profile</b>	Octagonal Leg, 43mm (2.5mm)
<b>Truss Profile</b>	30x15mm (2.8mm)
<b>Connecting Elements</b>	✓ Aluminum with Rubber Caps
<b>Push-Button Locks</b>	✓ Comfort Press
<b>Corner Brackets</b>	✓ Spring Tension & Corner Clips

### Weight

117.5lbs. (53.4kg)

### Transport Bag

Heavy-Duty PVC with Window

## Customization Options

### Roof Styles



### Frame Colors

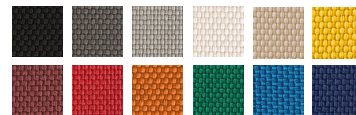
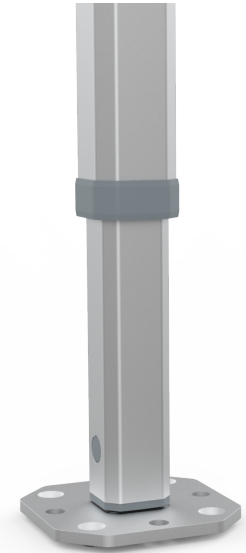


### Frame Height Extensions

✓ Up to 36"

### Peak Flag Capable

✓ Frame & Roof Integrated



### Custom Printing

Individual Logo or Full Surface 

### Roof Fabric Options

Pirontex®, Oxford Weave 500D Polyester, Heavy-Duty PVC, Fiberglass, Loden

## Textile Properties

### Waterproof Rating

(DIN EN 20811)

### Fire Rating Class

B - s2, d0 (difficult to ignite)

### Color Fade Resistance

(DIN EN ISO 105-B02)

## Pirontex®

### Waterproof Rating

✓ 5x Industry Avg  
5,000mm Water Column

### Fire Rating Class

NFPA 701, CPAI-84 Sec.6, EN 13501-1:2019, CAN/ULC-S109, CA Title 19 Sec. 1237

### Color Fade Resistance

Extreme  
(blue scale 7.0-8.0 of 8.0)

## Oxford 500D

### Waterproof Rating

✓ 2x Industry Avg  
1,600mm Water Column

### Fire Rating Class

NFPA 701, CPAI-84 Sec.6, EN 13501-1:2019, CAN/ULC-S109, CA Title 19 Sec. 1237

### Color Fade Resistance

Durable  
(blue scale 4.5-6.5 of 8.0)