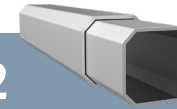


# 6.5x6.5ft



## Frame Specifications

**S2**



### Frame Construction

<b>Frame Material</b>	2x Strong, All-Aluminum (T606)
<b>Leg Shape &amp; Profile</b>	Octagonal Leg, 37mm (2.1mm)
<b>Truss Profile</b>	28.5x15mm (2mm)
<b>Connecting Elements</b>	✓ Aluminum with Rubber Caps
<b>Push-Button Locks</b>	✓ Comfort Press
<b>Corner Brackets</b>	✓ Fixed Position & Corner Clips

### Weight

49.3lbs. (22.4kg)

### Transport Bag

Heavy-Duty PVC with Window

## Customization Options

### Roof Styles



### Frame Colors

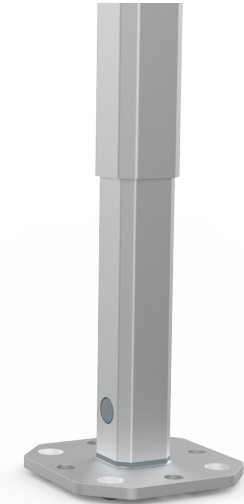
● Anodized Aluminum

### Frame Height Extensions

✓ Up to 12"

### Peak Flag Capable

✓ Frame & Roof Integrated



Our professional-grade tents can mix and match frame and fabric quality, roof styles, colors, customizations, and more.

**Rely on your Product Expert or visit our quick links:**

[Mastertent Website](#)

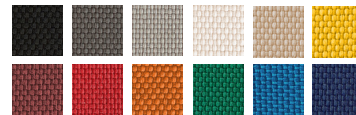
[3D Tent Configurator](#)

[Tent Sizes](#)

[Photo Gallery](#)

[Construction Details](#)

[Warranties & Certificates](#)



### Custom Printing

Individual Logo or Full Surface



### Roof Fabric Options

Pirontex®, Oxford Weave 500D Polyester, Heavy-Duty PVC, Fiberglass, Loden

## Textile Properties

### Pirontex®

### Oxford 500D

#### Waterproof Rating

(DIN EN 20811)

✓ 5x Industry Avg

5,000mm Water Column

✓ 2x Industry Avg

1,600mm Water Column

#### Fire Rating Class

B - s2, d0 (difficult to ignite)

NFPA 701, CPAI-84 Sec.6, EN 13501-1:2019,

CAN/ULC-S109, CA Title 19 Sec. 1237

#### Color Fade Resistance

(DIN EN ISO 105-B02)

Extreme

(blue scale 7.0-8.0 of 8.0)

Durable

(blue scale 4.5-6.5 of 8.0)