

Building up moments.

MASTERTENT®

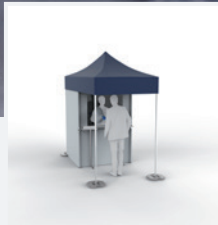


Medical and Health Care Solutions

Reliable crisis assistants,
for all missions against COVID-19.



Test Cabin for Indoor Use
Page 3



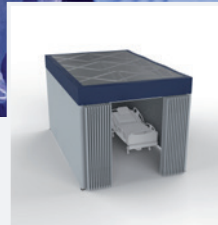
Test Cabin for Outdoor Use
Page 4



Disinfection Tunnel
Page 6



Mobile Visitor Center
Page 8



Mobile Patient Room
Page 10



Drive-In Test Center / Drive-Trough
Page 12



Kit Rescue & Kit Rescue Light
Page 14

Safe. Efficient. Innovative.

As European tent-manufacturer with our own production facilities, we are particularly flexible for the new demands of the current crisis. It allows us to quickly adapt to new challenges.

One of our special concerns is to find solutions to support you and all our daily COVID-19 heroes.



Test Cabin for Indoor Use

A small revolution in the enduring Corona crisis.

Protected in a closed tent cabin with integrated protective sleeves, medical staff or hospital personnel can work without their uncomfortable protective suits and comfortably perform indoors as well as outdoors

- fever measurements,
- fever measurements,
- Corona smear tests,
- antibody checks.

The person performing the tests is required to wear disposable gloves and a certified medical protective mask FFP2 or FFP3.

Protective Sleeves



Testing without a protective suit! Thanks to the transparent protective wall with integrated protective sleeves, fever measurements can be taken without actually leaving the tent.



Test Cabin for Outdoor Use

A small revolution in the enduring Corona crisis.

The protective tent can be set up within a few minutes right at the entrance of hospitals without any special authorisations. This means that all patients and visitors can be quickly checked for elevated temperature prior entering the building. Also checking for antibodies or possible Corona infections by making smear tests from mouth, nose or throat area, is possible.

Thanks to the transparent protective wall with integrated protective sleeves, fever measurements can be taken without actually leaving the tent. The person performing the tests is required to wear disposable gloves and a certified medical protective mask FFP2 or FFP3.

Protective Sleeves



Testing without a protective suit! Thanks to the transparent protective wall with integrated protective sleeves, fever measurements can be taken without actually leaving the tent.



Test Cabin for Indoor & Outdoor Use



Complete solution:

- It's available in the sizes 1,5x1,5 m and 3x1,5 m with flat or pointed roof.
- Sidewall all-round the tent, with integrated roll-up door that opens with zippers, additionally equipped with a fly net for improved air circulation.
- Integrated front window made of transparent PVC with incorporated protective sleeves.
- Counter as storage possibility for various objects.
- Included tent floor attached to the side walls.

Optional:

- Base plates for outdoor use.
- Sidewalls for the outdoor access area.

Sizes:

3x1,5

1,5x1,5



Other sizes can be manufactured upon request.

Disinfection Tunnel

Open-air spray shower for head-to-toe disinfection.

Hygiene standards are particularly high in hospitals. To further reduce the risk of infection, so-called disinfection tunnels can be built up right in front of the entrance area.

Our gazebo in the special size 1,5x4,5 m with integrated dormer is hereby used to create a protected space outdoors, where people can be disinfected from head to toe.

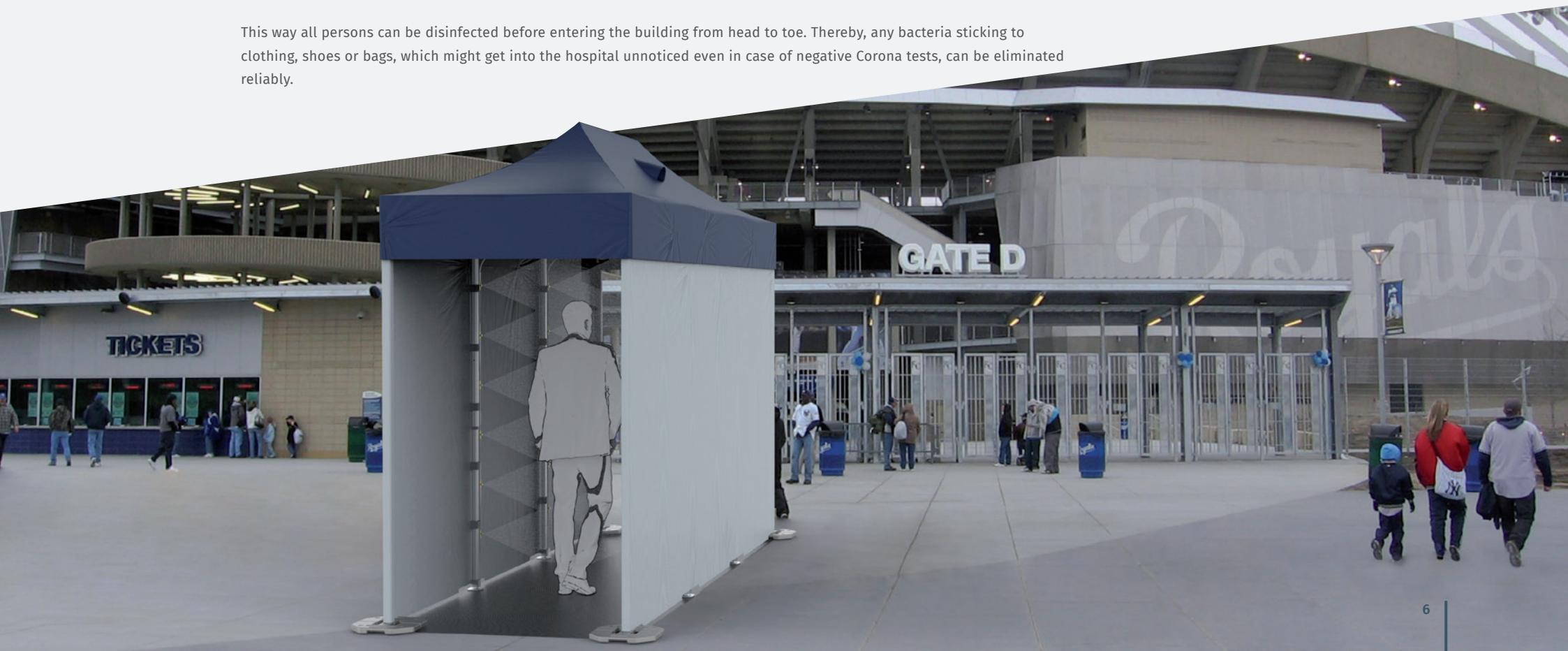
A nozzle system is integrated into the tent legs, whereby the disinfectant is dispersed into a fine mist of water, which ultimately covers all kinds of surfaces such as clothing, shoes, bags, etc.

This way all persons can be disinfected before entering the building from head to toe. Thereby, any bacteria sticking to clothing, shoes or bags, which might get into the hospital unnoticed even in case of negative Corona tests, can be eliminated reliably.

Disinfectants



The disinfectant is automatically added to the water by the dosage pump and kills viruses, bacteria and fungi quickly and easily while being harmless to people and the environment.



Disinfection Tunnel



Complete solution:

- Aluminium frame 1,5x4,5 m with 8 legs.
- Roof 1,5x4,5 m with 2 dormers (1 on each 4,5 m side).
- 2 closed sidewalls 4,5 m.
- Floor 1,5x4,5 m.
- 8 Base plates.
- 1 piece LED-lighting.
- Spraying plant (4 spray archs, 1 pump, tank for disinfection liquid).
- External pump station with
 - Switch cabinet with light barrier and time relay
 - High-pressure pump (70bar), water capacity 1 l/m
 - Automatic dosage pump
 - Holder for a 5l disinfectant canister
 - Water filter

Optional:

- Tent fabrics can be fully printed or customised with your logo.

Size:

1,5x4,5

Other sizes can be manufactured upon request.

Mobile Visitor Center

Safe and shielded - Visits to retirement homes can finally be allowed again.

For several weeks, residents of retirement homes have not been allowed to receive any visitors due to the COVID-19 pandemic. Therefore, as a tent-manufacturer, we have developed a solution that makes visits to old people's homes possible again. For not giving the virus any chance, a mobile visitor centre can be set up in just a few minutes in front of the old people's home.

Thereby a gazebo 4x2 m with a central, transparent protective wall is set up. The partition wall divides the tent into two sections and thus allows the safe and contactless meeting between visitors and residents. The persons must always wear a medical protective mask.

Transparent
protective wall



Visual contact between visitor and home resident thanks to a transparent PVC protective wall.



Mobile Visitor Center



Complete solution:

- 4x2 m aluminium frame.
- Tent fabric available in 12 colours.
- Sidewall 6m with panoramic window.
- 2 closed side walls 2m.

Optional:

- Floor 4x2 m or 2x2 m available.
- Custom printing of all tent fabrics possible.
- Base plates for outdoor use.
- Kit of stakes and tension straps.

Size:



Other sizes can be manufactured upon request.



Protective Private Rooms

Protect the healthy, isolate the infected.

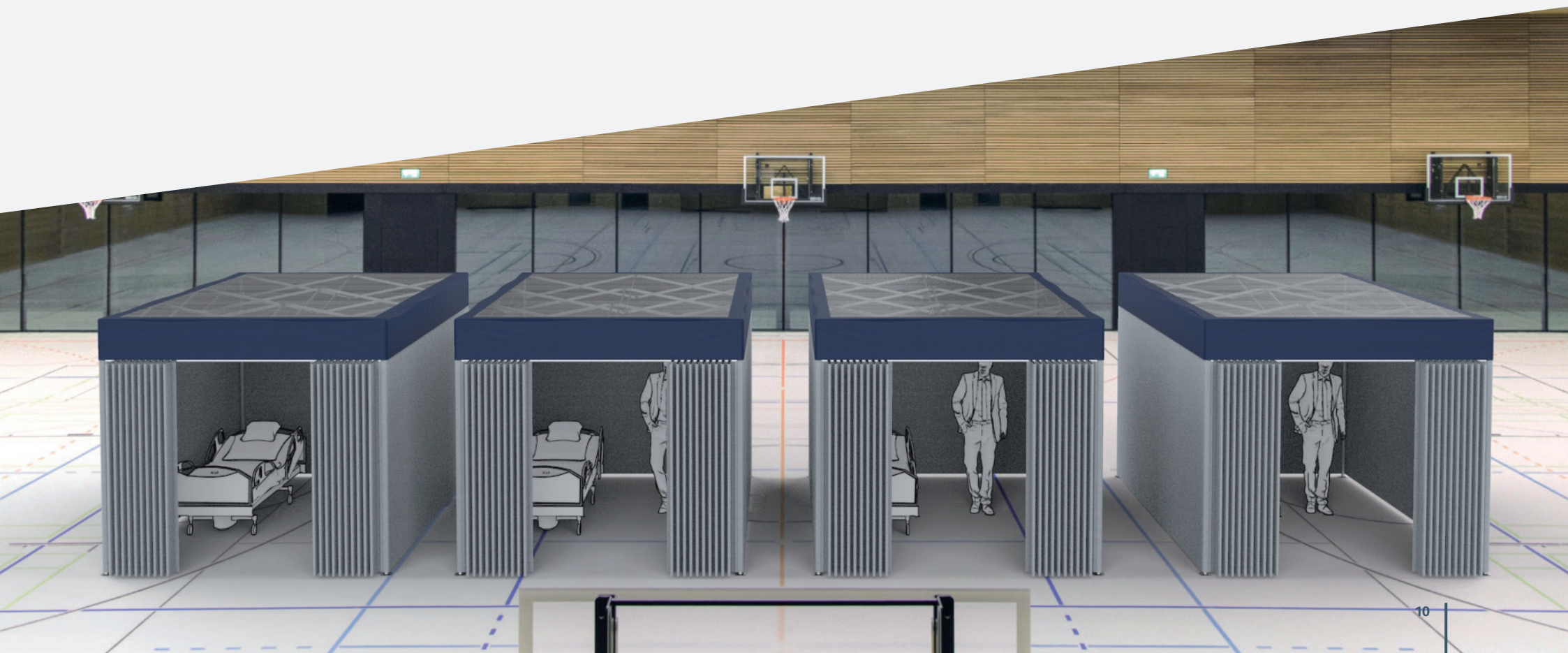
With our new tent construction, which can be flexibly positioned, you can easily create separate spaces. Whether in exhibition halls, gyms or hospitals - there is no faster way to create separate rooms for people in need. As a place to sleep or patient room - the fields of use are manifold.

The „patient room“ is covered at the top with a fly net. It consists of a side wall that stretches over 3 sides. The fourth, short side is equipped with a curtain, which makes the room flexible to use.

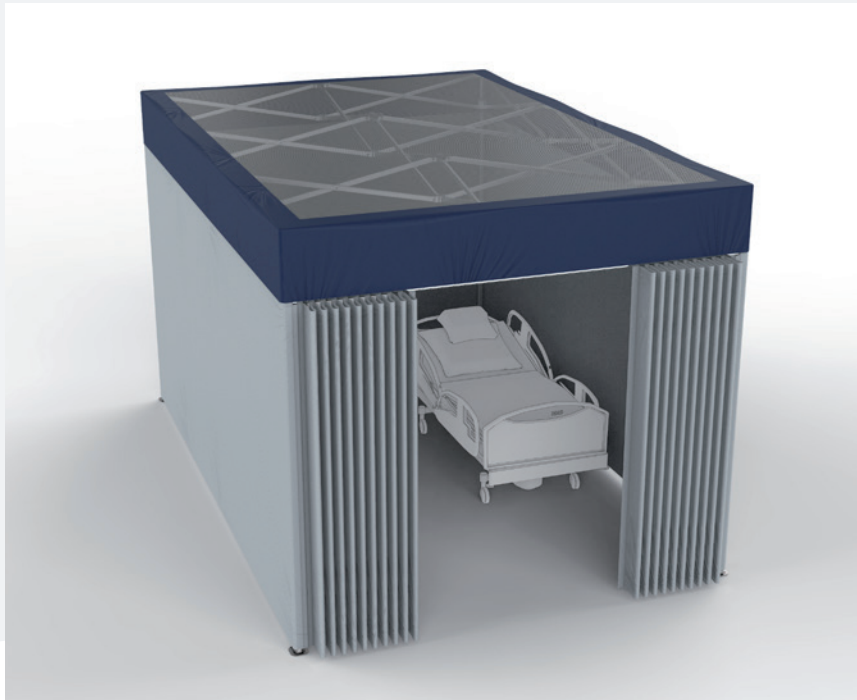
Infinitely
expandable



The indoor space solution allows to transform a gym into an emergency shelter within a very short time.



Protective Private Rooms



Complete solution:

- Aluminium frame 3,45x2,3 m.
- Flat roof 3,45x2,3 m with integrated fly net.
- Sidewall 9,2 m closed.
- Cross bar 2,3 m.
- 2 curtains.

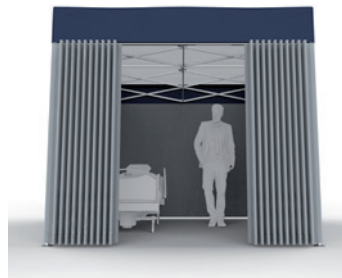
Optional:

- Tent fabrics can be fully printed or customised with your logo.

Size:

3,45x2,3

Other sizes can be manufactured upon request.

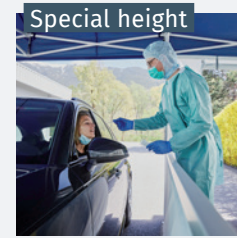


Drive-in Test Center

Test as many people as possible
in the shortest possible time.

Since the persons to be tested should have as little contact as possible with hospital staff, hospital facilities and other patients before and during the smear tests, mobile drive-in test stations / drive-through test centres are currently being installed across the country.

The compact packing sizes and easy transport of our gazebos enable helpers to set up such test stations quickly and at almost any location.



Thanks to the adjusted height of the sidewall the person carrying out the tests can easily lean towards the car drivers over the sidewall.



Drive-In Teststation



Complete solution:

- Aluminium frame 6x4m with 6 legs, available in 9 standard colours.
- Tent fabric available in 12 colours.
- Sidewall 8m with 2 doors.
- Cross bar 4m.
- Sidewall ½ height 4m (90cm high).

Optional:

- Tent fabrics can be fully printed or customised with your logo.

Size:

6x4

Other sizes can be manufactured upon request.

Kit Rescue & Kit Rescue Light

The most comprehensive safety package.

The Kit Rescue is the most comprehensive safety package you can imagine. Intelligent sidewall systems make the tent flexible to use. The Kit includes a non-slip floor and 4 special side walls with integrated doors, windows, fly nets and a PVC ground extension. Optionally, an interior tent can be added for pleasant room temperatures.

The Kit Rescue Light is a simplified version of our existing Kit Rescue. With some sophisticated approaches we managed to reduce both lead time and the price of the Kit Rescue Light to a minimum.

Optional Interior Tent



The Kit Rescue can be equipped with an additional inner tent. Together with the sidewalls of the outer tent, it forms an insulating air chamber that reduces temperature fluctuations remarkably inside the tent.



Kit Rescue & Kit Rescue Light



Kit Rescue



Kit Rescue light



Komplettlösungen:

■ Kit Rescue

- Aluminium frame.
- Tent roof available in 12 colours.
- 4 sidewalls with 3-layer window solution and door.
- Floor and sidewall are connected through a sophisticated interconnection system.
- Tent floor.

■ Kit Rescue Light

- Aluminium frame.
- Tent roof available in 12 colours.
- 2 sidewalls with 3-layer window solution and door, 2 sidewalls closed.
- Tent floor.

Optional:

- Interior Tent.
- Tent fabrics can be fully printed or customised with your logo.

Sizes:

8x4	6x4	6x3
4,5x3	4x4	3x3

Safe. Efficient. Innovative.

Our contribution to optimal prevention against COVID-19.



Easy-Up



There's no faster way!

The set-up is easy and fast. No tools are needed. Thus, a Mastertent gazebo is ready for action in a few seconds.



Waterproof



We won't leave you standing in the rain!

Regular waterproofing tests carried out on our tent fabrics testify to this.

Manufacturer



In-house production.

All of our canopy tents are built inhouse by Mastertent. High-quality, custommade solutions that are quickly produced and delivered.



MASTERTENT

a trademark of Zingerle SPA
Via Förche 7 · 39040 Naz-Sciaves
sales@mastertent.com · +39 0472 977 100

www.mastertent.com